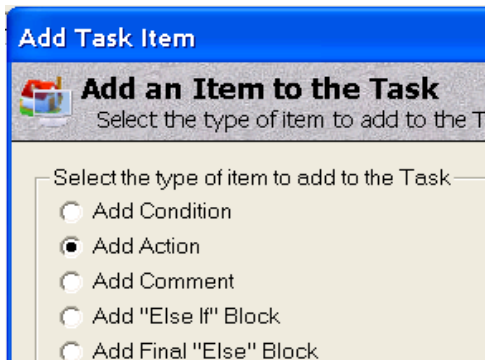


HouseBot Browser 2008

This is the latest incarnation of a browser window that can be controlled from within HouseBot to allow you to display web-based information (weather radar maps, IP camera video, traffic camera video, etc.) as well as local html-based pages and file system information. In addition, the program is suitable to enable one to build a simple browser to surf the web from within a software remote. This was coded in Visual Studio 2008 and should provide some enhanced features/compatibilities over the prior version (based on Visual Studio 98).



This application is meant to be used locally on the machine which will be running the software remote you want it to interact with. As a result, a copy of the executable should be placed on each PC that will use it. How to open and close the application from commands executed on the server will be covered later. I would recommend placing the executable in its own folder - C:\Program Files\HouseBot Browser 2008.

To be able to open the application on the PC remotely from the HouseBot server, you will need to create a task. Name the task something interesting and then choose “Add Action”. Under “Action

Type”, select “Control Remote”. Under “Action” select “Execute Application” and under “Which Remote” select “Calling Remote”. In the textbox for “Path and Name of Program” input the full path to HouseBot Browser 2008.exe on the PC the calling remote is being run on. In the “Program Arguments” textbox you will need to add the following command line arguments tailored to your system:

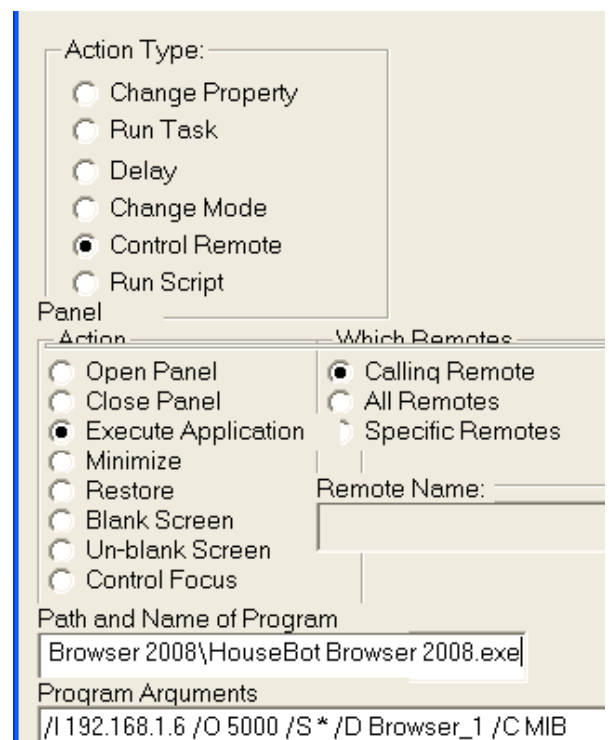
/I <IP Address of the PC running the HouseBot Server>

/O <Server IP Port of your External Control device>

/S <Server Password of your External Control device>
*-use * here if no password is specified-*

/D <Name of the Null or Execute Program device that controls the browser instance>
-if you plan on having multiple, independent browser instances, you will need a device for each instance-

/C <Declaration for single- or multi-instance browser>
-use SIB for single-instance and MIB for multi-instance-



Now click “OK” and your task is done. You should be able to use this task to open HouseBot Browser 2008 on any PC on your network that is running a software remote and has the browser executable installed.

In addition to creating this task, you will need to create an External Control device and set the Server Port and Server Password. Remember, if you leave the Server Password blank you will need to input /S * in the command line arguments above.

Device Type: Null Device

Name of Device: Browser_1

Device Comments:

Enabled ☒

Properties	
Back	False
BrowserQuit	False
Execute Program	No
Forward	False
OnTop	True
Reload	False
ResolutionX	600
ResolutionY	405
ScrollBars	True
ScrollDown	False
ScrollLeft	False
ScrollRight	False
ScrollUp	False
ScrollXDistance	1000
ScrollYDistance	100
TimerInterval	500
Transparency	1
URL	http://www.cebotics.
X	0
Y	0

Pictured at left are the device properties required to control HouseBot Browser 2008. The “Execute Program” property is included in case an Execute Program device is used to run the browser locally on the HouseBot server. This is a required property even if you are using a null device. The acceptable values for this property are Yes and No if it is created in a Null device.

The majority of the property values are True/False and likely self-explanatory for those who have used a browser before.

- Back moves to the previous page when set to “True”
- BrowserQuit closes the browser application when set to “True”
- Execute Program see device help if not a Null device
- Forward moves to the next page when set to “True”
- OnTop places the browser on top of all other applications
- Reload reloads the current browser page
- ResolutionX the horizontal browser dimension in pixels
- ResolutionY the vertical browser dimensions in pixels
- Scrollbars scrollbars are displayed if set to “True”
- ScrollDown scrolls down when set to “True”
- ScrollLeft scrolls left when set to “True”
- ScrollRight scrolls right when set to “True”
- ScrollUp scrolls up when set to “True”
- ScrollXDistance horizontal distance to scroll in pixels
- ScrollYDistance vertical distance to scroll in pixels
- TimerInterval interval to update browser settings in ms
- Transparency browser transparency from 0 to 1
- URL the page to load into the browser
- X the horizontal screen position to place the browser in pixels
- Y the vertical screen position to place the browser in pixels

Of note, HBControlMod.dll and Interop.HBControlMod.dll need to be placed on each PC that you plan to run the browser on. These should be placed in the same folder as the executable file. Once placed, HBControlMod.dll will need to be registered using Run from the start menu and entering regsvr32 in combination with the full path to the .dll file:

```
regsvr32 "C:\Program Files\HouseBot Browser 2008\HBControlMod.dll"
```

Enjoy!!

Osler